

TUESDAY

15:10-15:35

Alp's World Junior
15:10-15:35

Fast Track Phonics A
15:10-15:35



15:50-16:15

On Track Reading
15:50-16:15

16:45-17:10

New **Book Club: Magic Treehouse: Dolphins at Daybreak** 16:45-17:10

Science Circle
16:45-17:10

17:15-17:40

★ Nature's Notebook
17:15-17:40

Magical Mysteries
17:15-17:40

17:45-18:10

Big Think
17:45-18:10

18:15-18:40

New **Alp in Space: A Journey through the Solar System**
18:15-18:40

18:50-19:15

Quiz Night
18:50-19:15

Story Time A
18:50-19:15

19:20-19:45

THURSDAY

15:10-15:35

On Track Writing
15:10-15:35

15:50-16:15

Alp's World Junior
15:50-16:15

Fast Track Phonics B
15:50-16:15

16:45-17:10

New **Book Club: Magic Treehouse: Dolphins at Daybreak** 16:45-17:10

★ Connect the Dots
16:45-17:10

Quiz Night
16:45-17:10

17:15-17:40

★ Art in Color
17:15-17:40

Magical Mysteries
17:15-17:40

17:45-18:10

On Track Reading
17:45-18:10

Science Circle
17:45-18:10

18:15-18:40

Fast Track Phonics A
18:15-18:40

★ Nature's Notebook
18:15-18:40

18:50-19:15

Big Think
18:50-19:15

Story Time B
18:50-19:15

19:20-19:45

WEDNESDAY

On Track Reading
15:10-15:35

Alp's World Junior
15:50-16:15



Fast Track Phonics A
15:50-16:15



★ Art in Color
16:45-17:10

Big Think
16:45-17:10

★ Connect the Dots
17:15-17:40

Quiz Night
17:45-18:10



Story Time B
18:15-18:40

Magical Mysteries
18:50-19:15

Story Time A
18:50-19:15

★ Nature's Notebook
19:20-19:45

New **Alp in Space: A Journey through the Solar System** 19:20-19:45



This is a brand new class this month. Why not give it a try?



A new theme for this class this month.



A reopened class with all new content.

Class Descriptions



English



Japanese

- Story Time will host two unique stories per week.
- Fast Track Phonics' 12 lessons will continue to be split into A and B schedules. In August, A classes will cover lessons 9, 10, 11, and 12; B classes will cover lessons 3, 4, 5, and 6. Students can join all sessions.



Please refer to the daily schedule in KA Connect to see the courses with printable materials.



KA Plus!

KA Plus! Grade 1

KA Weeks 21 - 24 (7/30 - 8/26)

FRIDAY

15:10-15:35

Fast Track Phonics B
15:10-15:35

15:50-16:15

On Track Writing
15:50-16:15

16:45-17:10

17:15-17:40

17:45-18:10

Big Think
17:45-18:10

18:15-18:40

Story Time A
18:15-18:40

18:50-19:15

Story Time B
18:50-19:15

19:20-19:45



New **Alp in Space: A Journey through the Solar System** 15:10-15:35



MONDAY

15:10-15:35

15:50-16:15

16:45-17:10

17:15-17:40

17:45-18:10

18:15-18:40

18:50-19:15

On Track Reading
18:50-19:15

19:20-19:45

On Track Writing
19:20-19:45



Story Time B
18:50-19:15

Story Time A
19:20-19:45



SATURDAY

13:10-13:35

Magical Mysteries
13:10-13:35

13:40-14:05

New **Nature's Notebook**
13:40-14:05

14:10-14:35

Science Circle
14:10-14:35

14:40-15:05

Alp's World Junior
14:40-15:05



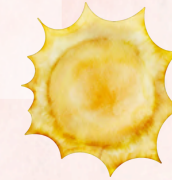
Class Descriptions



English



Japanese



This is a brand new class this month. Why not give it a try?



A new theme for this class this month.



A reopened class with all new content.



- Story Time will host two unique stories per week.
- Fast Track Phonics' 12 lessons will continue to be split into **A** and **B** schedules. In August, **A** classes will cover **lessons 9, 10, 11, and 12**; **B** classes will cover **lessons 3, 4, 5, and 6**. Students can join all sessions.



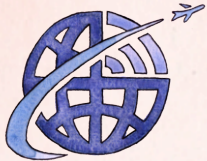
Please refer to **the daily schedule in KA Connect** to see the courses with printable materials.



KA Plus!

KA Plus! Early Schedule for Grade 1

KA Weeks 21 - 24 (7/30 - 8/26)



KA Plus!



TUESDAY

WEDNESDAY

THURSDAY

FRIDAY

MONDAY

10:00-10:25

**Alp's World
Junior**
10:00-10:25

Quiz Night
10:00-10:25



**Magical
Mysteries**
10:00-10:25

**Nature's
Notebook**
10:00-10:25

Story Time A
10:00-10:25



10:30-10:55

Connect the Dots
10:30-10:55

**Fast Track
Phonics A**
10:30-10:55

Story Time B
10:30-10:55

**Fast Track
Phonics B**
10:30-10:55

Big Think
10:30-10:55



Class Descriptions



English



Japanese



Please refer to **the daily schedule in KA Connect** to see the courses with printable materials.