

### TUESDAY

15:10-15:35

**Alp's World Junior**  
15:10-15:35

**Fast Track Phonics A**  
15:10-15:35



15:50-16:15

**On Track Reading**  
15:50-16:15

16:45-17:10

**New Book Club: Magic Treehouse: Ghost Town at Sundown** 16:45-17:10 **New Phenomenal Plants** 16:45-17:10

17:15-17:40

**New Nature's Notebook**  
17:15-17:40

**New All New Adventure Avenue**  
17:15-17:40

17:45-18:10

**Big Think**  
17:45-18:10

18:15-18:40

**Alp in Space: A Journey through the Solar System**  
18:15-18:40

18:50-19:15

**Quiz Night**  
18:50-19:15



**Story Time A**  
18:50-19:15

19:20-19:45

### THURSDAY

15:10-15:35

**On Track Writing**  
15:10-15:35

15:50-16:15

**Alp's World Junior**  
15:50-16:15



**Fast Track Phonics B**  
15:50-16:15

16:45-17:10

**New Book Club: Magic Treehouse: Ghost Town at Sundown** 16:45-17:10 **New Connect the Dots** 16:45-17:10

**Quiz Night**  
16:45-17:10

17:15-17:40

**New Art in Color**  
17:15-17:40

**New All New Adventure Avenue**  
17:15-17:40

17:45-18:10

**On Track Reading**  
17:45-18:10

**New Phenomenal Plants**  
17:45-18:10



18:15-18:40

**Fast Track Phonics A**  
18:15-18:40

**New Nature's Notebook**  
18:15-18:40

18:50-19:15

**Big Think**  
18:50-19:15



**Story Time B**  
18:50-19:15

19:20-19:45

### WEDNESDAY

**On Track Reading**  
15:10-15:35

**Alp's World Junior**  
15:50-16:15

**New Art in Color**  
16:45-17:10

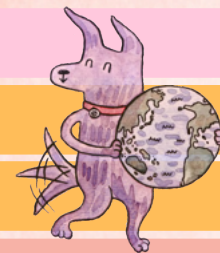
**New Connect the Dots**  
17:15-17:40

**Quiz Night**  
17:45-18:10

**Story Time B**  
18:15-18:40

**New All New Adventure Avenue**  
18:50-19:15

**New Nature's Notebook**  
19:20-19:45



**Fast Track Phonics A**  
15:50-16:15

**Big Think**  
16:45-17:10

**New Phenomenal Plants**  
17:15-17:40

**Story Time A**  
18:50-19:15

**Alp in Space: A Journey through the Solar System** 19:20-19:45



This is a brand new class this month. Why not give it a try?



A new theme for this class this month.



A reopened class with all new content.

#### Class Descriptions



English



Japanese

- Story Time will host two unique stories per week.
- Fast Track Phonics' 12 lessons will continue to be split into A and B schedules. In September, A classes will cover lessons 1, 2, 3, and 4; B classes will cover lessons 7, 8, 9, and 10. Students can join all sessions.



Please refer to the daily schedule in KA Connect to see the courses with printable materials.



KA Plus!

# KA Plus! Grade 1

## KA Weeks 25 - 28 (9/3 - 9/30)

### FRIDAY

15:10-15:35

**Fast Track Phonics B**  
15:10-15:35

**Alp in Space: A Journey through the Solar System** 15:10-15:35

15:50-16:15

**On Track Writing**  
15:50-16:15

16:45-17:10

17:15-17:40

17:45-18:10

**Big Think**  
17:45-18:10



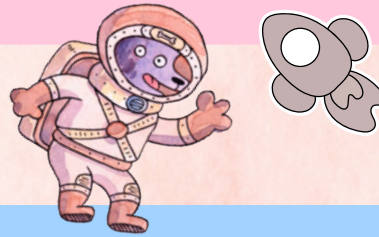
18:15-18:40

**Story Time A**  
18:15-18:40

18:50-19:15

**Story Time B**  
18:50-19:15

19:20-19:45



### MONDAY

15:10-15:35

15:50-16:15

16:45-17:10

17:15-17:40

17:45-18:10

18:15-18:40

18:50-19:15

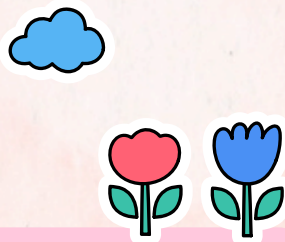
**On Track Reading**  
18:50-19:15

19:20-19:45

**On Track Writing**  
19:20-19:45

**Story Time B**  
18:50-19:15

**Story Time A**  
19:20-19:45



### SATURDAY

13:10-13:35

**New** **All New Adventure Avenue**  
13:10-13:35

13:40-14:05

**New** **Nature's Notebook**  
13:40-14:05

14:10-14:35

**Alp's World Junior**  
14:10-14:35



#### Class Descriptions



English



Japanese



This is a brand new class this month. Why not give it a try?



A new theme for this class this month.



A reopened class with all new content.

- Story Time will host two unique stories per week.
- Fast Track Phonics' 12 lessons will continue to be split into **A** and **B** schedules. In September, **A** classes will cover **lessons 1, 2, 3, and 4**; **B** classes will cover **lessons 7, 8, 9, and 10**. Students can join all sessions.



Please refer to **the daily schedule in KA Connect** to see the courses with printable materials.



KA Plus!